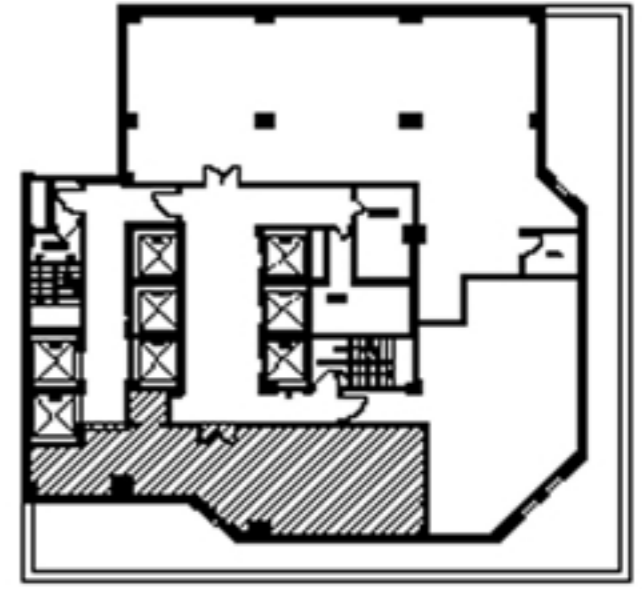
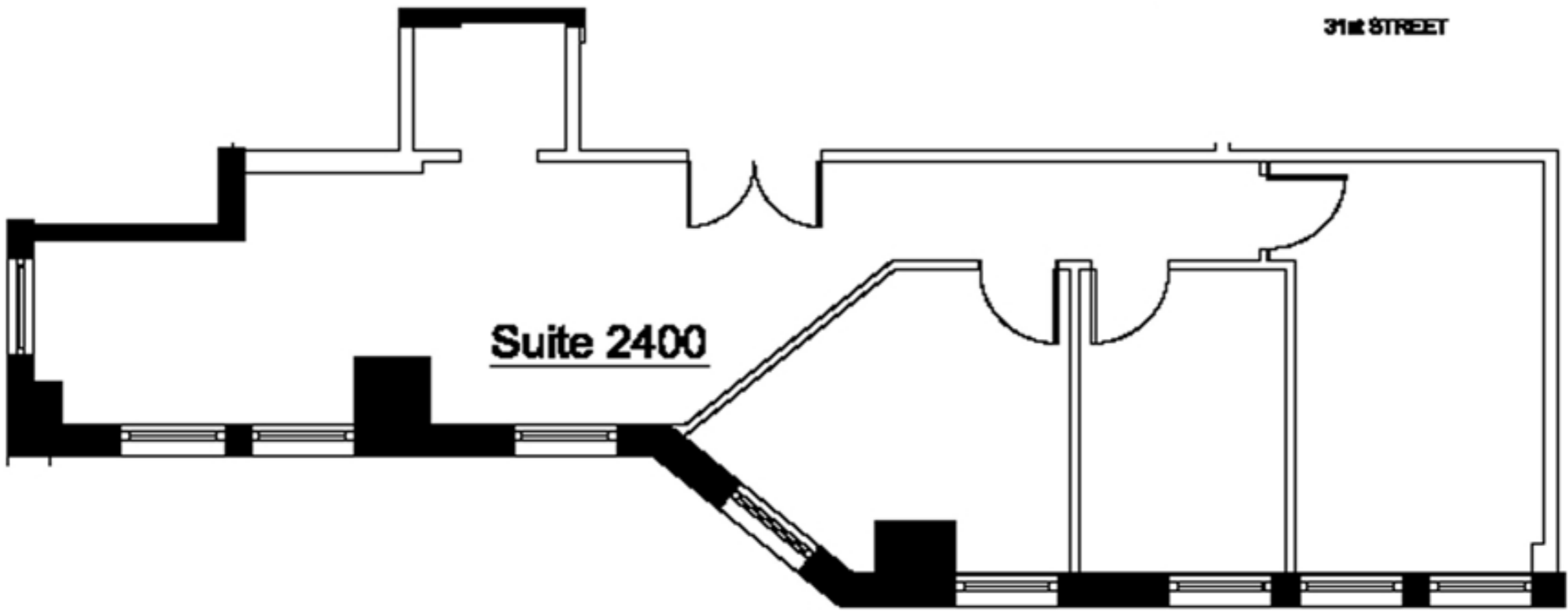


AVENUE OF THE AMERICAS



31st STREET



Suite 2400

© 2011 Lee & Associates, Inc. All rights reserved. Please refer to the attached floor plan for more information.

RDM
 REAL ESTATE DEVELOPMENT MANAGEMENT
 T: 212.213.8100
 F: 212.213.8125
 www.rdm.com

FOR LEASING INFORMATION
 Peter Braus Managing Principal
 pbraus@lee-associates.com
 (646) 723-4720

LEE & ASSOCIATES
 NYC

875 6th Avenue
 New York, NY 10001
 24th Floor

